

**Town of Granite Falls
Wastewater Treatment Plant
Annual Operational Report
For The Year 2006**

2006 Highlights

The Granite Falls wastewater treatment plant is meeting all the limitations and requirements of NPDES Permit NC0021890, Land Application Permit WQ0001618, and Laboratory Certification #303 as issued by the North Carolina Division of Water Quality

The North Carolina Division of Water Quality inspected the Town of Granite Falls wastewater treatment plant on January 17, 2006. Their response letter stated that the facility was found to be in compliance with permit NC0021890 and that the treatment facility was neatly kept; laboratory records and data for self monitoring reports were handled in an exemplary manner.

The Granite Falls wastewater treatment plant laboratory was not inspected by the North Carolina Division of Water Quality, laboratory section during the 2006 year. The laboratory is scheduled for inspection on February 15, 2007.

The Granite Falls wastewater treatment plant land application program was inspected by the North Carolina Division of Water Quality aquifer protection section on October 24, 2006. General comments included that the facility appears to be doing an adequate job maintaining the land application program. The 2005 annual report for application of class B bio-solids was completed and mailed to U.S. EPA and the North Carolina Division of Water Quality on February 28, 2006.

Class B bio-solids along with alum sludge from the water treatment plant were applied to area farm lands during the months of June and July 2006.

2006 IMPROVEMENTS

No major improvements were scheduled for the 2006 year. Normal maintenance functions along with building and grounds upkeep were continued as prescribed in our preventive maintenance plan. The wastewater treatment plant will turn 20 years old in 2007. A 20 year equipment life expectancy is typical design criteria for wastewater treatment plant equipment. With our scheduled and preventive maintenance program we hope to extend the life of this equipment for several more years.

SUMMARY

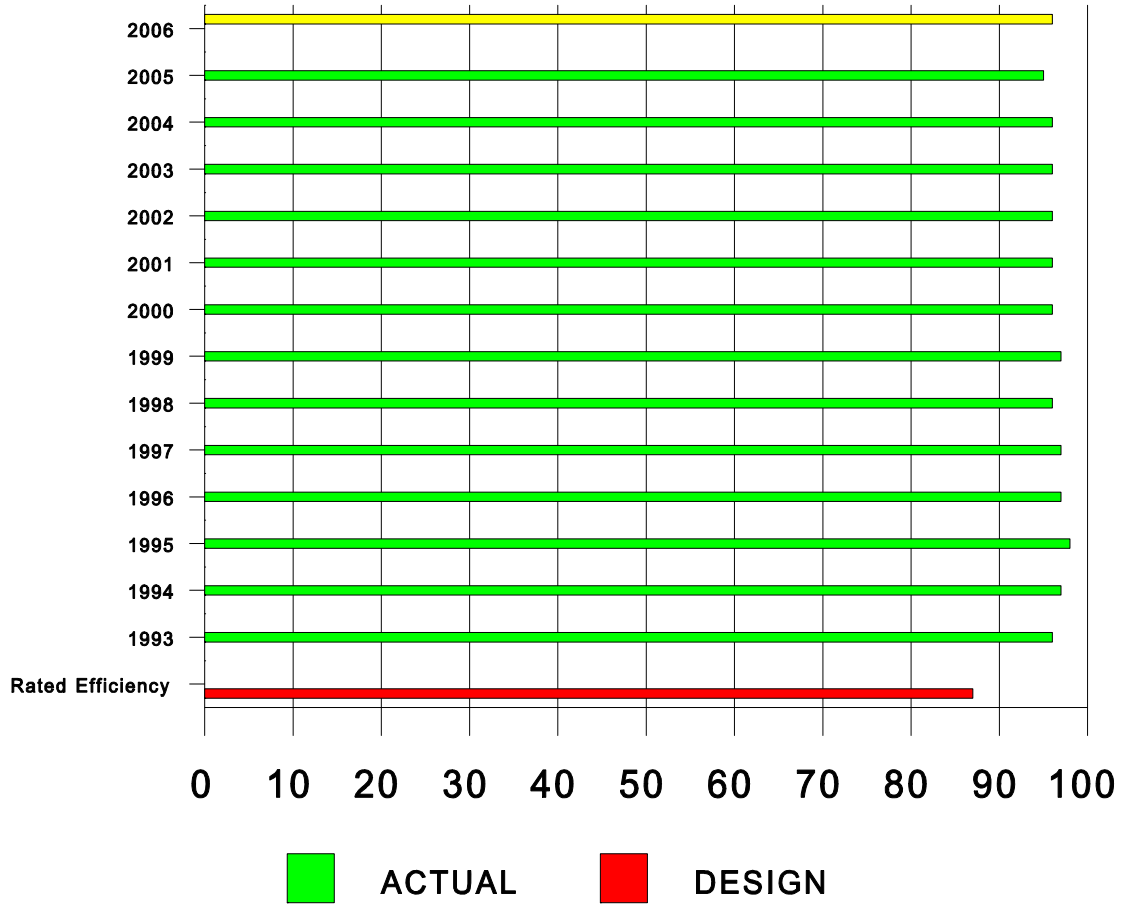
The Granite Falls wastewater treatment plant has operated without any major problems or difficulties during the 2006 year. For the past 20 years the facility has operated without any major operational or regulatory difficulties. This excellent track record can be attributed to a dedicated staff along with a sound operational, laboratory and preventive maintenance plan initiated in 1987 with the original plant startup.

Planning for the future will be a major issue for the treatment facility. Major areas that will have to be addressed will be; age of the facility, land availability for expansion, regulatory and NPDES requirements along with the disposal of bio-solids. With proper planning we will prepare and address these and other future challenges.

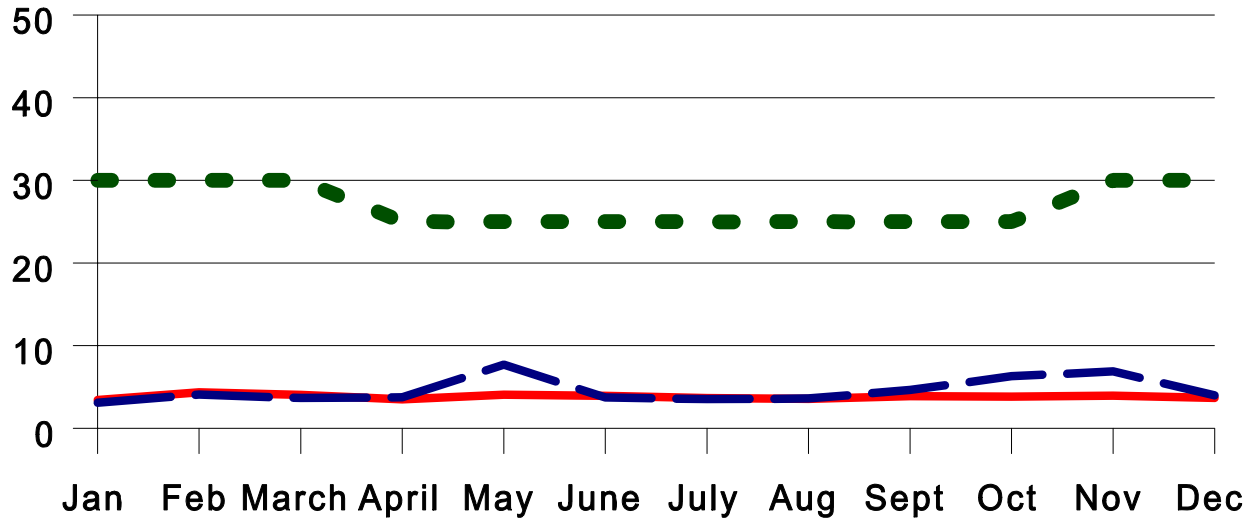
The wastewater treatment plant continues to operated in a environmentally and cost effective manner. As always the treatment plant staff takes considerable pride in the overall operation and appearance of the treatment facility. The appearance and operation of this facility is reflection of how well you do your job along with the support you receive from Town officials.

TOWN OF GRANITE FALLS DEPARTMENT OF WATER RESOURCES WATER AND WASTEWATER TREATMENT PLANTS 2006 ANNUAL REPORT

OVERALL TREATMENT PLANT EFFICIENCY

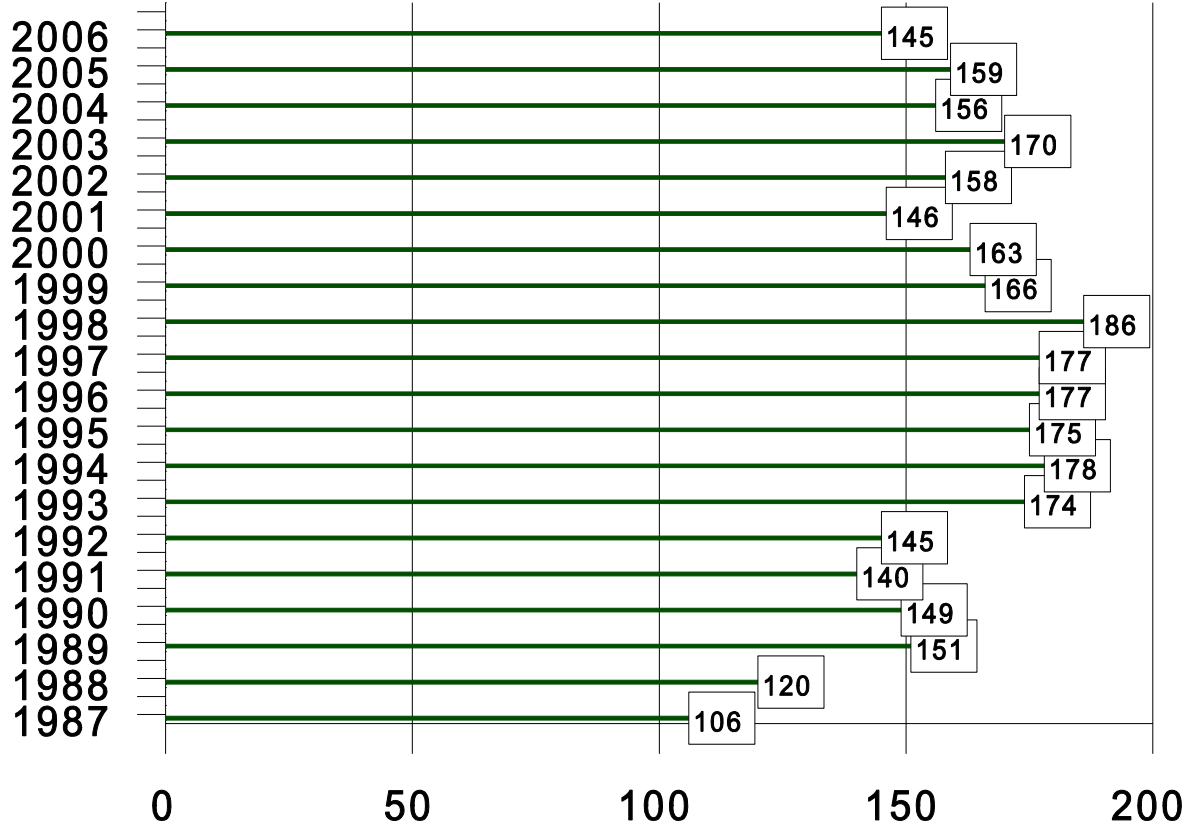


2006 BOD&TSS RESULTS GRANITE FALLS W.W.T.P.



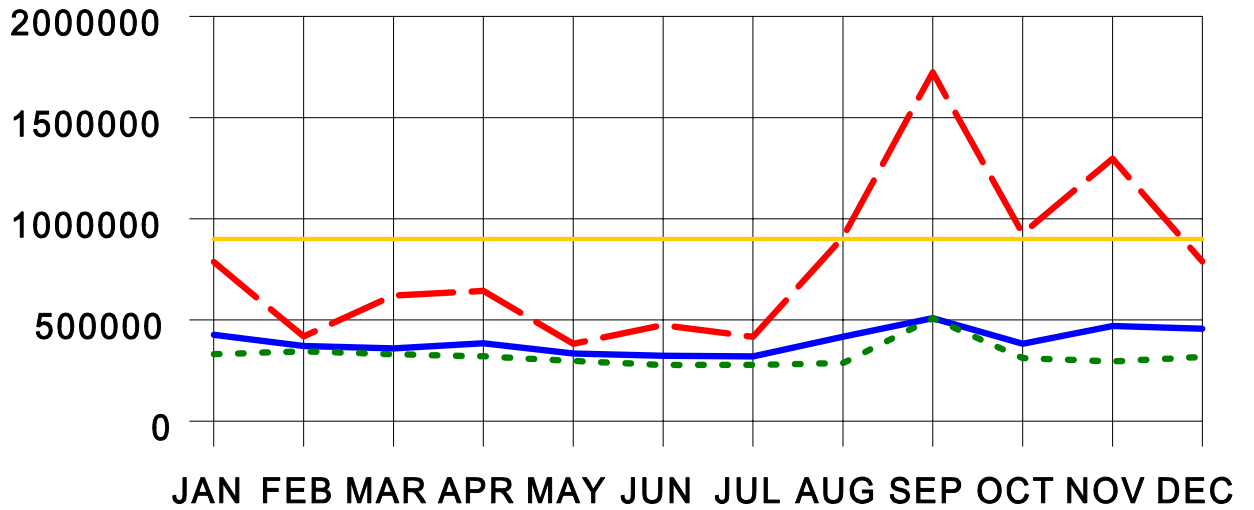
- Effluent BOD
 - - - Effluent TSS
 - ● ● NPDES PERMIT LIMIT
- RESULTS IN MG/L

GRANITE FALLS W.W.T.P. FLOW RATES



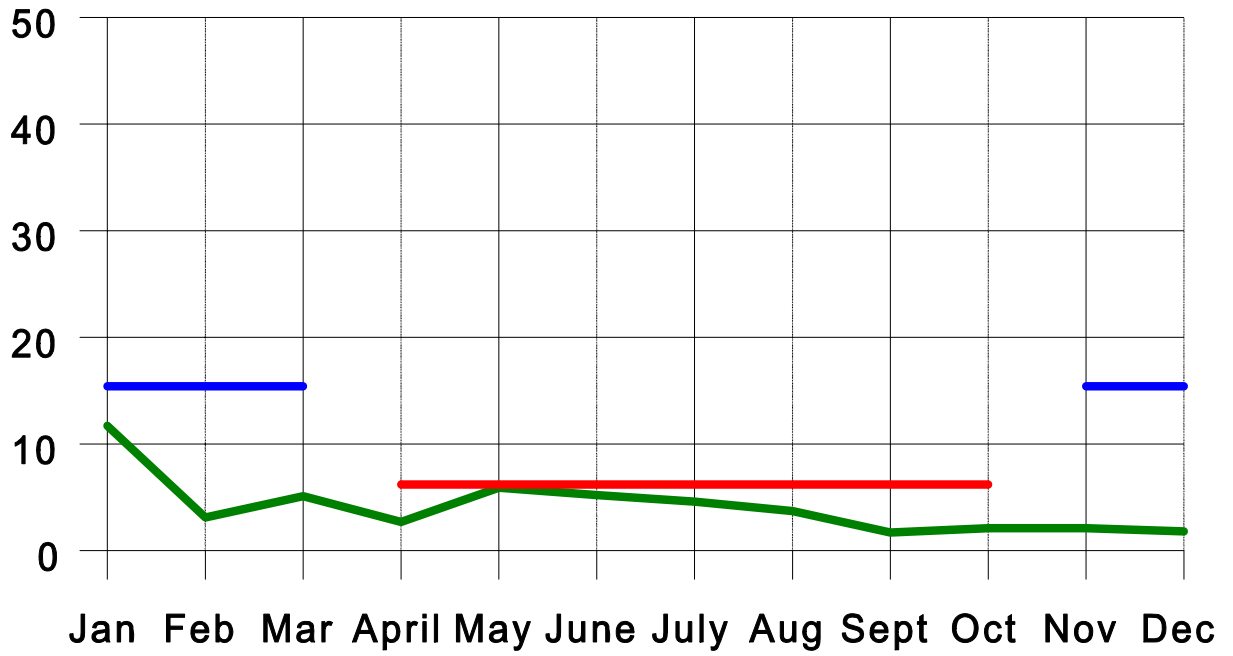
 FLOW MILLION GALLONS




2006 FLOW RATES (Gallons)



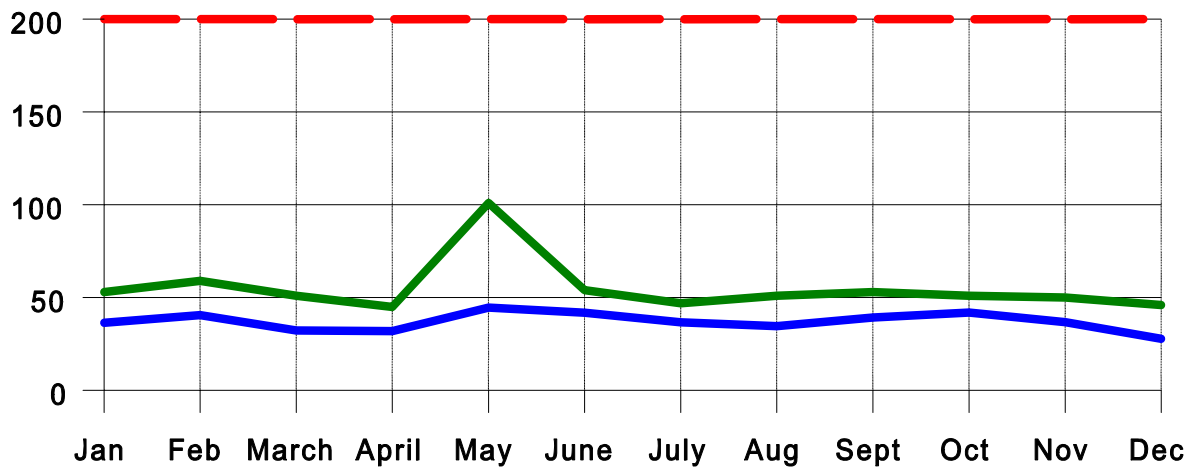
- AVERAGE
- - - HIGH
- ... LOW
- Permit Limit (Average)




2006 AMMONIA NITROGEN RESULTS GRANITE FALLS W.W.T.P.



-  NH3 MG/L
-  NPDES LIMIT Summer
-  NPDES LIMIT Winter

2006 Fecal Coiform Results Granite Falls W.W.T.P.



-  AVERAGE FECAL COLIFORM /100 ML
-  NPDES LIMIT
-  MAXIMUM FECAL COLIFORM / 100ML

AVERAGE BOD & TSS RESULTS 2006			GRANITE FALLS WASTEWATER TREATMENT PLANT			
	INFLUENT BOD	INFLUENT TSS		EFFLUENT BOD	EFFLUENT TSS	
JANUARY	262 mg/l	107 mg/l		6.84 mg/l	6.22 mg/l	
FEBRUARY	294 mg/l	135 mg/l		8.74 mg/l	8.19 mg/l	
MARCH	246 mg/l	130 mg/l		8.08 mg/l	7.36 mg/l	
APRIL	220 mg/l	155 mg/l		7.00 mg/l	7.53 mg/l	
MAY	246 mg/l	228 mg/l		8.11 mg/l	15.41 mg/l	
JUNE	245 mg/l	242 mg/l		7.88 mg/l	17.56 mg/l	
JULY	229 mg/l	221 mg/l		7.30 mg/l	7.12 mg/l	
AUGUST	228 mg/l	182 mg/l		7.15 mg/l	7.23 mg/l	
SEPTEMBER	229 mg/l	155 mg/l		7.79 mg/l	9.29 mg/l	
OCTOBER	229 mg/l	190 mg/l		7.64 mg/l	12.60 mg/l	
NOVEMBER	224 mg/l	205 mg/l		7.93 mg/l	13.78 mg/l	
DECEMBER	306 mg/l	225 mg/l		7.35 mg/l	8.00 mg/l	
AVERAGE INFLUENT BOD FOR 2006			246 mg/l			
AVERAGE INFLUENT TSS FOR 2006			181 mg/l			
AVERAGE EFFLUENT BOD FOR 2006			7.65 mg/l	PERMIT LIMIT	25 / 30 mg/l	
AVERAGE EFFLUENT TSS FOR 2006			10.02 mg/l	PERMIT LIMIT	30 mg/l	
OVERALL TREATMENT PLANT EFFICIENCY (%)			96%			
RATED EFFICIENCY OF TREATMENT PLANT			87%			